



EXTECH specializes in providing safe, functional façade solutions for parking facilities. Our systems are engineered to fit each specific application with pedestrian safety, code compliance, performance, and aesthetics in mind.

## FEATURES AND BENEFITS

### LOW MAINTENANCE

Systems specifically designed for durability and longevity, reducing costs associated with maintenance.

### SAFETY & SECURITY

Our systems are code compliant and add an extra layer of safety, such as ventilation and preventing falls, to a parking structure.

### SPEED & EASE OF INSTALLATION

Systems are engineered for simplicity, reducing costs associated with installation.

### SUSTAINABILITY

Our systems are factory fabricated for less field waste. Our 100% recyclable systems can support LEED goals.

### INTEGRATED DESIGN APPROACH

We work with all stakeholders in projects, from the planning stage to installation.

### MADE IN THE USA

Our systems are manufactured in the USA in our Pittsburgh and Las Vegas facilities.

## KINETICWALL

EXTECH's KINETICWALL is an optimal façade system for standalone or mixed-use parking facilities because it delivers durability, air flow, easy installation, and simple maintenance. Additionally, it permits visibility from the inside while preventing the nuisance of interior lighting spillage.

Made of "flappers" attached to stainless steel rods, the KINETICWALL responds to wind currents and ripples to create the look of rolling waves. The system is customizable and can be designed to accommodate square or curved polycarbonate, glass, aluminum, or steel flappers, and can be finished with color-shifting paint. The KINETICWALL is structurally designed to withstand hurricane-force winds, and uses spacers designed to prevent collateral noise from flappers. The KINETICWALL allows facilities to meet ventilation codes while providing solar screening.



*KINETICWALL for parking structure at City of Hope Duarte*

## POLYCARBONATE

EXTECH's polycarbonate systems can be integrated into parking structures, creating a secure and visually appealing environment. Our polycarbonate systems are adaptable to wall openings and other field conditions. Our polycarbonate systems are ideal for parking structures because of their UV resistance, durability, and design flexibility.

For an extra layer of security, translucent polycarbonate screen walls can be backlit to transform a structure at night. . Polycarbonate is an excellent choice for backlit glazed façades because of its light diffusing qualities, color brilliance, low flammability, and insulating value.



*Backlit polycarbonate façade for Foothill Transit*



*Backlit polycarbonate façade for Pittsburgh Greyhound garage*

## CUSTOM FAÇADES

We've solved many design challenges with custom solutions through engineering custom façades.

One example is a parking façade comprised of vertical tubing in Virginia, with a paint finish designed to mimic the appearance of terracotta. Each tube is connected to the edge of floor slabs, with a unique extrusion designed for deflection and thermal movement.

We have used GEOLAM to emulate the appearance of bamboo in a parking structure, and used other materials to customize parking facilities, bringing to life an architect's vision.

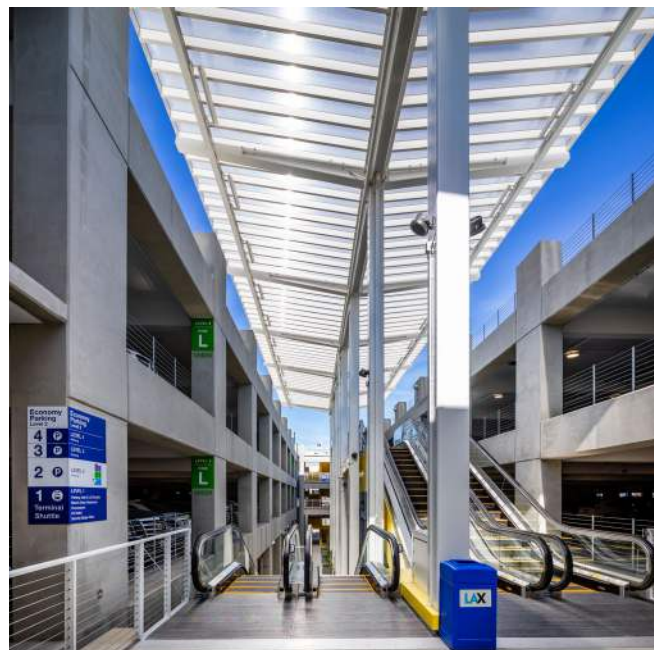


*Custom engineered metal façade finished to resemble terracotta*

## CANOPIES

SKYSHADE canopies offer the durability and long lifespan needed in parking applications. They hold-up in wind, rain, sleet, and snow, and resist UV deterioration. SKYSHADE canopies are designed with lightweight, fully fabricated components that install easily. This makes for quick project deployment, simple maintenance, and cost-savings.

The SKYSHADE can be used to cover walkways, escalators, or serve as standalone canopies at parking facilities. They can feature standing seam cellular polycarbonate, solid monolithic polycarbonate sheets, flat-sheet multiwall polycarbonate, or glass. Polycarbonate comes in a variety of translucencies and colors, tailored to the custom application, and reduce glare.



*SKYSHADE 3700 at LAX economy parking facility*



EXTECH / Exterior Technologies, Inc.  
200 Bridge St. Pittsburgh, PA 15223



Email: [info@extechinc.com](mailto:info@extechinc.com)  
Website: [www.extechinc.com](http://www.extechinc.com)



Toll Free +1 800 500 8083  
Local +1 412 781 0991



Toll Free +1 800 500 8083  
Local +1 412 781 0991