



With 45+ years of experience delivering systems for the transit industry, we are equipped to meet the requirements and demands of transit structures and regulations. Our systems are built to help transportation authorities meet their bottom line and boost ridership.

FEATURES AND BENEFITS

VANDAL-RESISTANCE & LOW MAINTENANCE

Designed for protection from vandalism, durability, and minimal maintenance, our systems are extremely economical for transit operations.

SAFETY & SECURITY

Transparent and translucent systems offer security and safety wherever needed. Lighting can be integrated for additional security.

SPEED & EASE OF INSTALLATION

Systems are engineered for simplicity, reducing costs associated with installation and operational impacts.

COST-SAVINGS & SUSTAINABILITY

Low maintenance, longevity, and simplified installation of the systems reduce overall costs. 100% recyclable systems for LEED credits.

INTEGRATED DESIGN APPROACH

We work with all stakeholders in transit projects, from the planning stage to installation.

MADE IN THE USA

EXTECH's products are manufactured on-site in our Pittsburgh, PA factory.

GRIDLOCK

The GRIDLOCK glass block system is great for transit structures, and can take the form of a windscreen, shelter, partition, or durable interior and exterior wall system. It possesses extreme durability and vandal resistance. The system can be repaired and maintained with little cost and last for decades.

GRIDLOCK features 2" thick clear, frosted, or pattern etched glass units and does not require sealants or adhesives -- making replacements a "snap". Individual blocks can be replaced in less than 1 minute.

The lightweight, pre-assembled aluminum frame installs rapidly for minimal patron disruption, while requiring little to no maintenance. The system is customizable in various bond patterns and accepts other creative inserts.



GRIDLOCK wall system for SEPTA stadium

CLEANWALL

EXTECH's CLEANWALL is an interior porcelain wall panel system that is great for transit interiors like transit stations and bus shelters. The CLEANWALL offers outstanding vandal-resistance --porcelain veneer allows easy removal of graffiti (including permanent marker) with simple cleaning products. It also resists scratching, chipping, gouging, and environmental damage. Its non-corrosive heavy-gauge aluminum framing delivers further resilience to vandalism. It is customizable to accept any interior or exterior 1/2" wall panels. Framing is designed to allow for easy field fabrication, with simple square cuts.

Fully customizable, CLEANWALL installs quickly by contracted or agency laborers. Optional framing allows individual panel replacement without disturbing adjacent panels. The system allows quick access to the structure behind the panel (enabling easy inspection of structural waterproofing and electrical wiring), can be installed over a wide variety of substrates, and is adaptable to wall openings and other field conditions.



CLEANWALL system demonstrating easy graffiti removal



EXTECH / Exterior Technologies, Inc.
200 Bridge St. Pittsburgh, PA 15223



Email: info@extechinc.com
Website: www.extechinc.com



Toll Free +1 800 500 8083
Local +1 412 781 0991



Toll Free +1 800 500 8083
Local +1 412 781 0991

FAÇADES

EXTECH's KINETICWALL is an optimal façade system for standalone or mixed-use parking facilities because it delivers durability, air flow, vandal resistance, easy installation, and low maintenance. Additionally, it permits visibility from the inside while preventing the nuisance of interior lighting pollution.

The KINETICWALL responds to wind currents and ripples to create the look of rolling waves, creating an ever changing facade and memorable landmark. Kinetics are fully customizable to meet any aesthetic, performance, and budget goals.

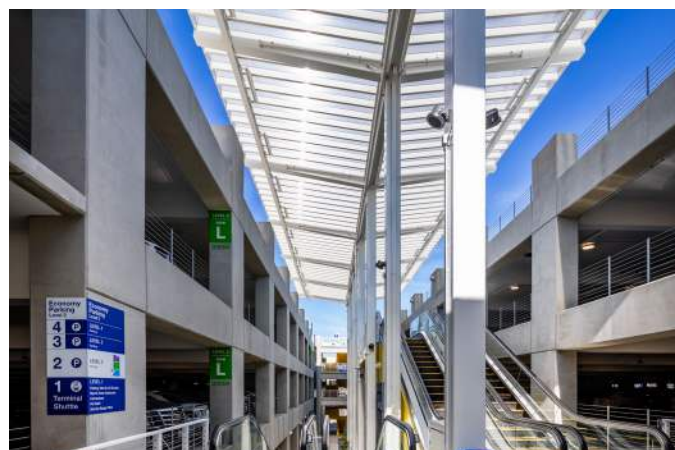
Additionally, EXTECH's custom façades are a great solution for parking facilities. Offering design-assistance, engineering, and fabrication, EXTECH can create systems that fit into any vision.



KINETICWALL system for Boston Logan Airport parking structure



Custom façade for Fairfax, VA County parking facility



SKYSHADE system for LAX Intermodal Transportation Facility

CANOPIES

SKYSHADE canopies offer the durability and long lifespan needed in transit applications. They hold-up in wind, rain, sleet, and snow, and resist UV deterioration, unlike FRP systems. SKYSHADE canopies are designed with lightweight, fully fabricated components that install easily. This makes for quick project deployment, simple maintenance, and cost-savings.

The SKYSHADE can be used to cover pedestrian walkways or serve as standalone canopies at bus stops, bike shelters, and above-ground rapid transit stations. They can feature standing seam cellular polycarbonate, solid monolithic polycarbonate sheets, flat-sheet multi-wall polycarbonate, or glass. Polycarbonate comes in a variety of translucencies and colors, tailored to the custom application, and reduce glare and overheating of patron areas.



VENTILATION

The TECHVENT 5300 window system delivers natural lighting and massive ventilation, which is key for reducing energy costs and increased comfort and productivity. Buildings that house heat-generating motor vehicles and equipment require air flow to reduce demand on the HVAC system. This continuous top-hinged window system can remain open during normal rainfall, providing ventilation regardless of exterior weather condition. It also can be fitted with insect and bird screens.

The TECHVENT 5300 can be installed in an individual punched opening or in continuous runs of up to 150 feet. The system can be operated with optional manual or electronic control systems and can be tied to the building's HVAC control system.

Our LIGHTWALL 3440 can be incorporated as a fixed window system, offering the benefits of daylighting, energy efficiency, and durability.



TECHVENT 5300 used at NYC Transit Authority



TECHVENT 5300 used at a data center for ventilation



TECHVENT 5300 system used at NYC Transit Authority



TECHVENT 5300 used at a data center



EXTECH / Exterior Technologies, Inc.
200 Bridge St. Pittsburgh, PA 15223



Email: info@extechinc.com
Website: www.extechinc.com



Toll Free +1 800 500 8083
Local +1 412 781 0991



Toll Free +1 800 500 8083
Local +1 412 781 0991

DAYLIGHTING

EXTECH's translucent wall systems are ideal for transit centers and maintenance depots. They provide necessary daylight for maintenance operations, facility management personnel, and commuters. Not only does daylight reduce the need for overhead lighting, saving energy -- daylighting also provides many health and wellness benefits.

Maintenance facilities require plentiful lighting without eye strain from sun glare. Polycarbonate panels diffuse daylight, providing lighting that is easy on the eyes. Mechanics, repair technicians, and all facility employees benefit from natural light in transit applications. Airports, distribution centers, and rail maintenance facilities also incorporate polycarbonate panels to their facilities.



TECHVENT 5300 and LIGHTWALL 3440 used at a rail yard



TECHVENT 5300 and LIGHTWALL 3440 used at a rail yard



LIGHTWALL 3440 used at a transit facility



LIGHTWALL 3440 used at an aircraft hangar at Boston Airport