

# **SKYGARD/SKYSHADE 3700®**

## INSTALLATION OVERVIEW



---

## TABLE OF CONTENTS

---

<b>I INTRODUCTION</b>	Page 3
<b>I SYSTEM OVERVIEW</b>	Page 4
<b>I STEP 1: Prepare for Installation</b>	Page 5
<b>I STEP 2: Perimeter Flashing</b>	Page 6
<b>I STEP 3: Perimeter Base Extrusions</b>	Page 7
<b>I STEP 4: Fasten Initial Rafter</b>	Page 8
<b>I STEP 5: Set Additional Rafters</b>	Page 9
<b>I STEP 6: Fasten to Supporting Structure</b>	Page 10
<b>I STEP 7: Install Glazing Panels</b>	Page 11
<b>I STEP 8: Pressure Caps</b>	Page 12
<b>I STEP 9: Finish Installing Glazing</b>	Page 13
<b>I STEP 10: Initial Perimeter Cover Caps</b>	Page 14
<b>I STEP 11: Gutters, Downspouts And Head Flashing</b>	Page 15
<b>I STEP 12: Cleaning And Maintenance</b>	Page 16
<b>I Care And Storage</b>	Page 16
<b>I Assistance</b>	Page 17

## I INTRODUCTION

---

The 3700® system is an aluminum framed system, designed to be self-supporting and can span large openings. Specially designed for cellular polycarbonate, this system also accepts glass. Its unique stainless steel pin mounting system makes it incredibly easy for connection of horizontal to vertical framing.

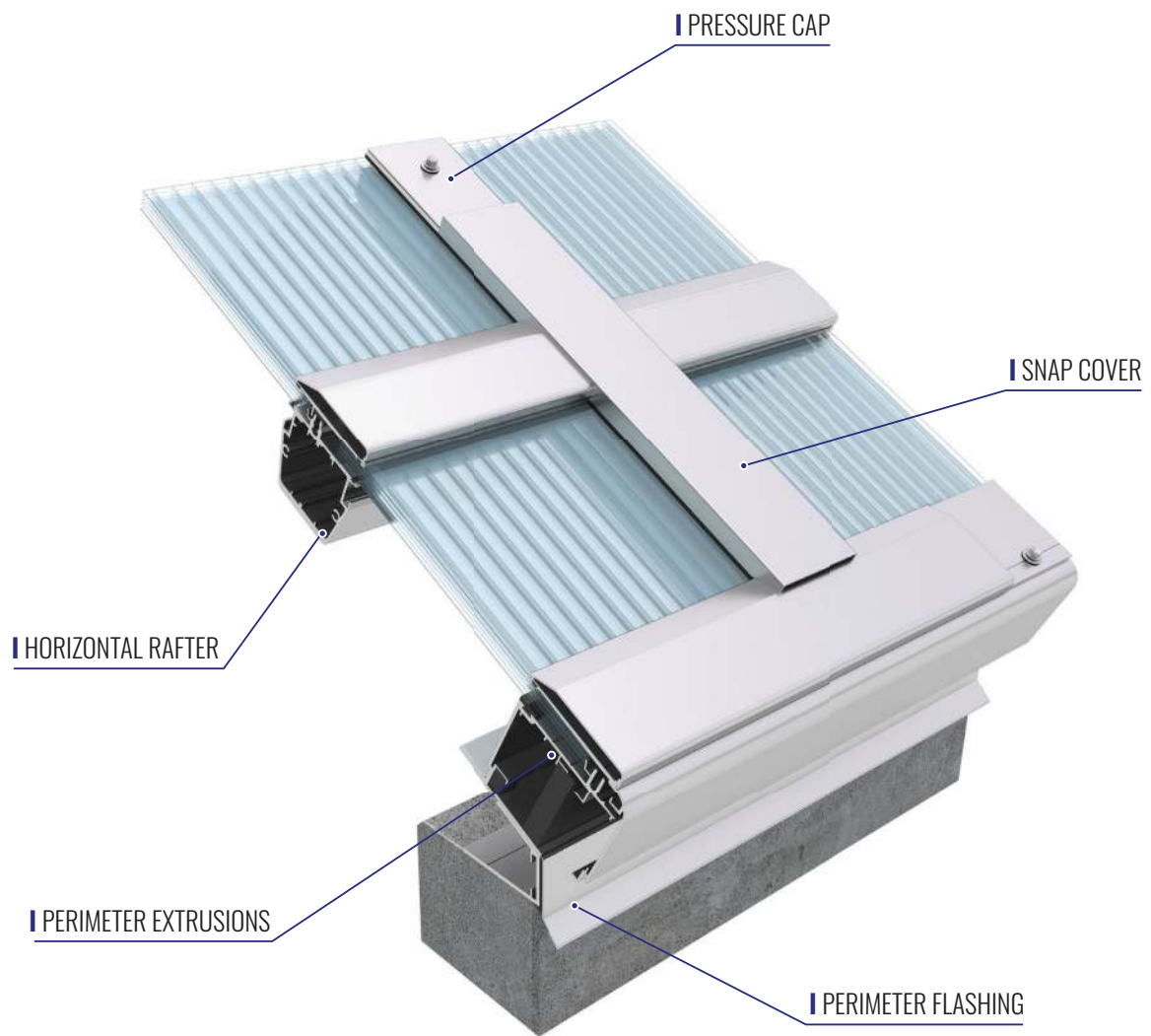
These Instructions provide an overview of a typical 3700® installation. Please refer to project specific installation drawings for dimensions, configuration and installation notes that may be unique to your project.

If you have any questions regarding installation, please call EXTECH technical support at **1-800-500-8083**.



## SYSTEM OVERVIEW

---



## STEP 1: PREPARE FOR INSTALLATION

---

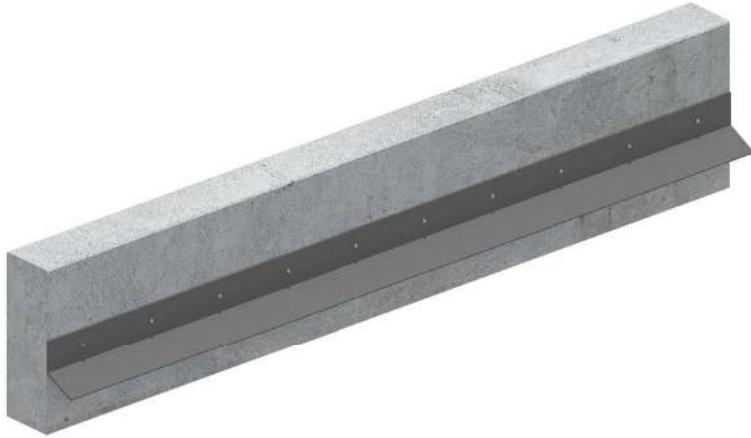
- Check the overall canopy or skylight layout against the steel supporting structure before starting the installation.
- Ensure that the opening is plumb, level, and square.



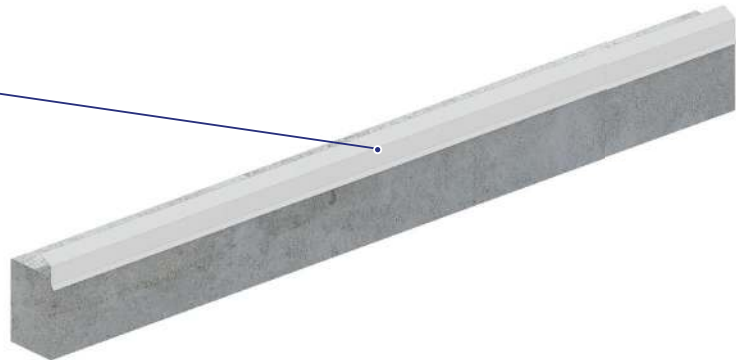
*Note: Your project may require a different system configuration or a different installation sequence and could vary from the steps shown in these instructions. Please make sure to review project shop drawings before starting installation.*

## I STEP 2: INSTALL PERIMETER FLASHING

---



I PERIMETER FLASHING

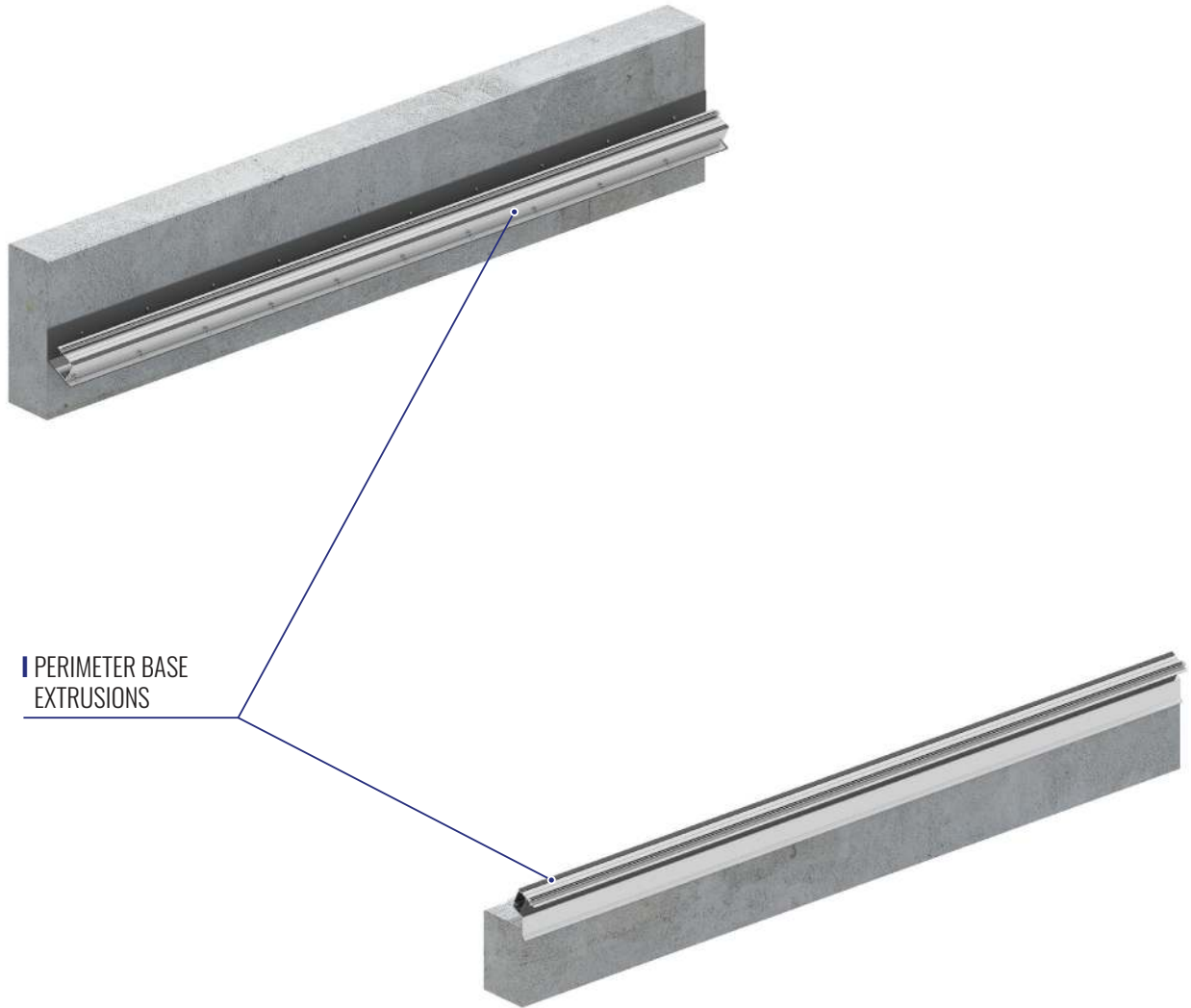


*Note: Flashing requirements will vary based on application. Consult project specific installation instructions.*

---

## I STEP 3: INSTALL PERIMETER BASE EXTRUSIONS

---

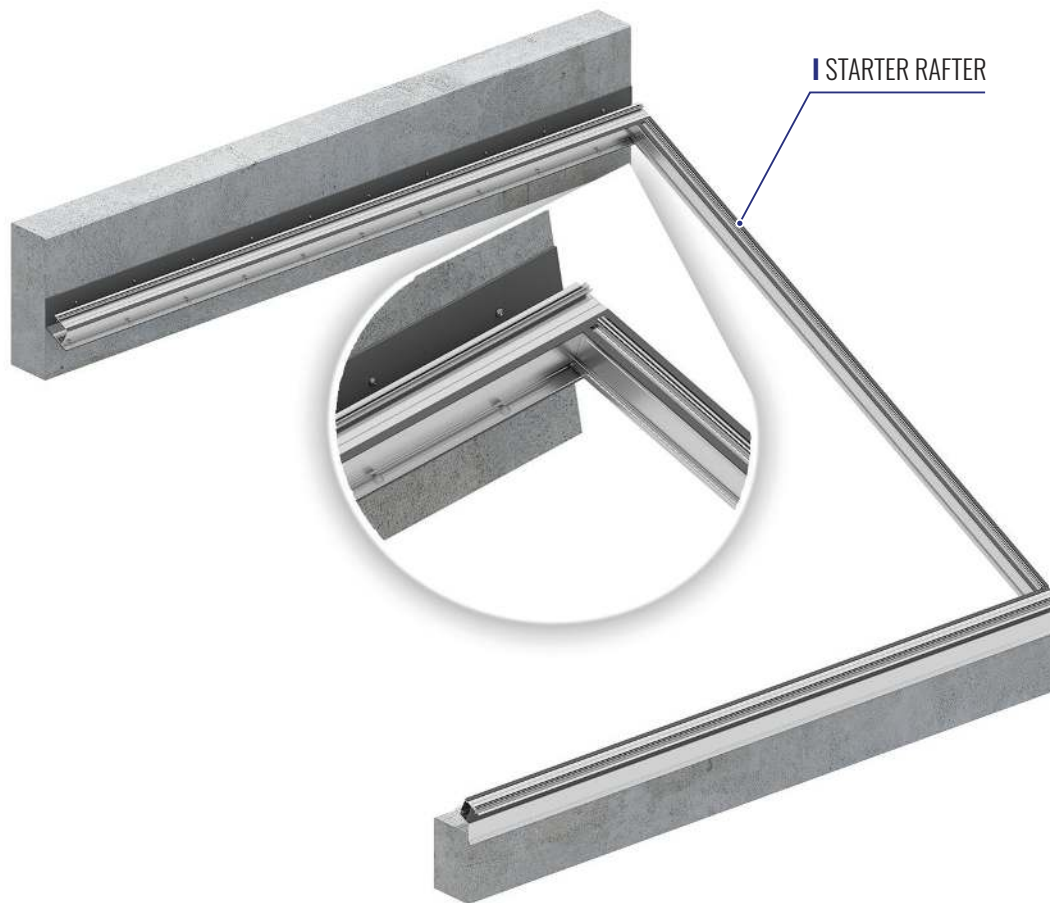


*Note: A variety of perimeter extrusion options exist depending on the application. The install sequence may vary depending on the extrusions for your specific application.*

## STEP 4: FASTEN INITIAL RAFTER

---

- Fasten the first rafter to the perimeter extrusions as indicated on project installation instructions.



*Note: Attachment fasteners typically are typically supplied by the installing contractor, based on the substrate and method of installation.*

---



## **STEP 5:** SET ADDITIONAL RAFTERS

---

- Set the second and third rafter in place by fastening it to the perimeter base extrusions at the pre-drilled locations.



## I STEP 6: FASTEN TO SUPPORTING STRUCTURE (IF APPLICABLE)

---

- Once the rafters are fastened to the perimeter framing, fasten them to any intermediate supporting structure if applicable.



---

*Note: A variety of attachment options to the supporting structure are available. Please consult with Extech to discuss options.*

---

## I STEP 7: INSTALL GLAZING PANELS

---

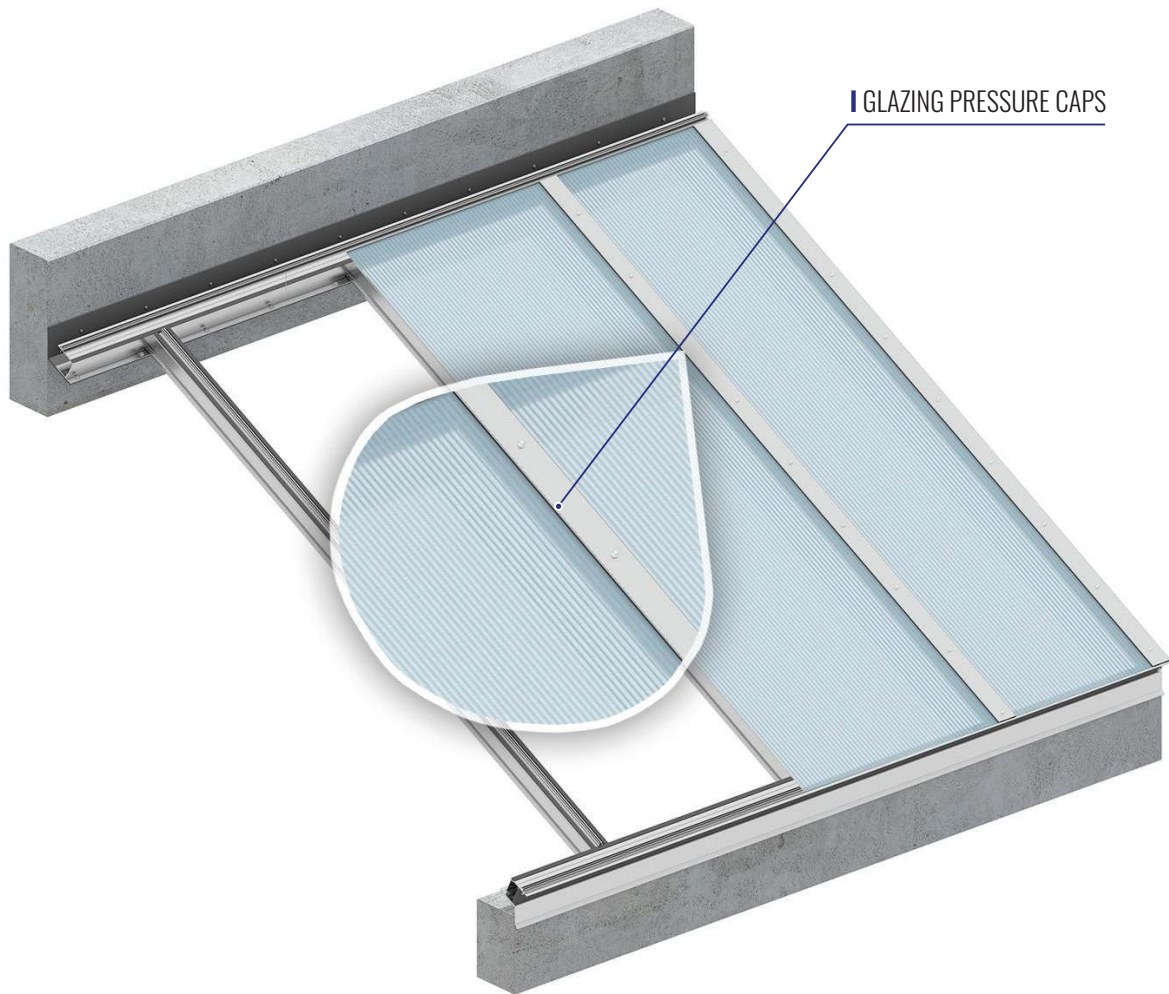
- Install the first glazing panel between the first two rafters, centering them between the screw tracks.



## STEP 8: PRESSURE CAPS

---

- Install pressure caps over the glazed rafters.



*Note: Depending on the application, foam inserts or sealed joints may be required. consult project specific installation instructions.*  
*Note: Install pressure caps prior to install the next glazing panel due to "reach" over the panel.*

---

## STEP 9: FINISH INSTALLING GLAZING

---

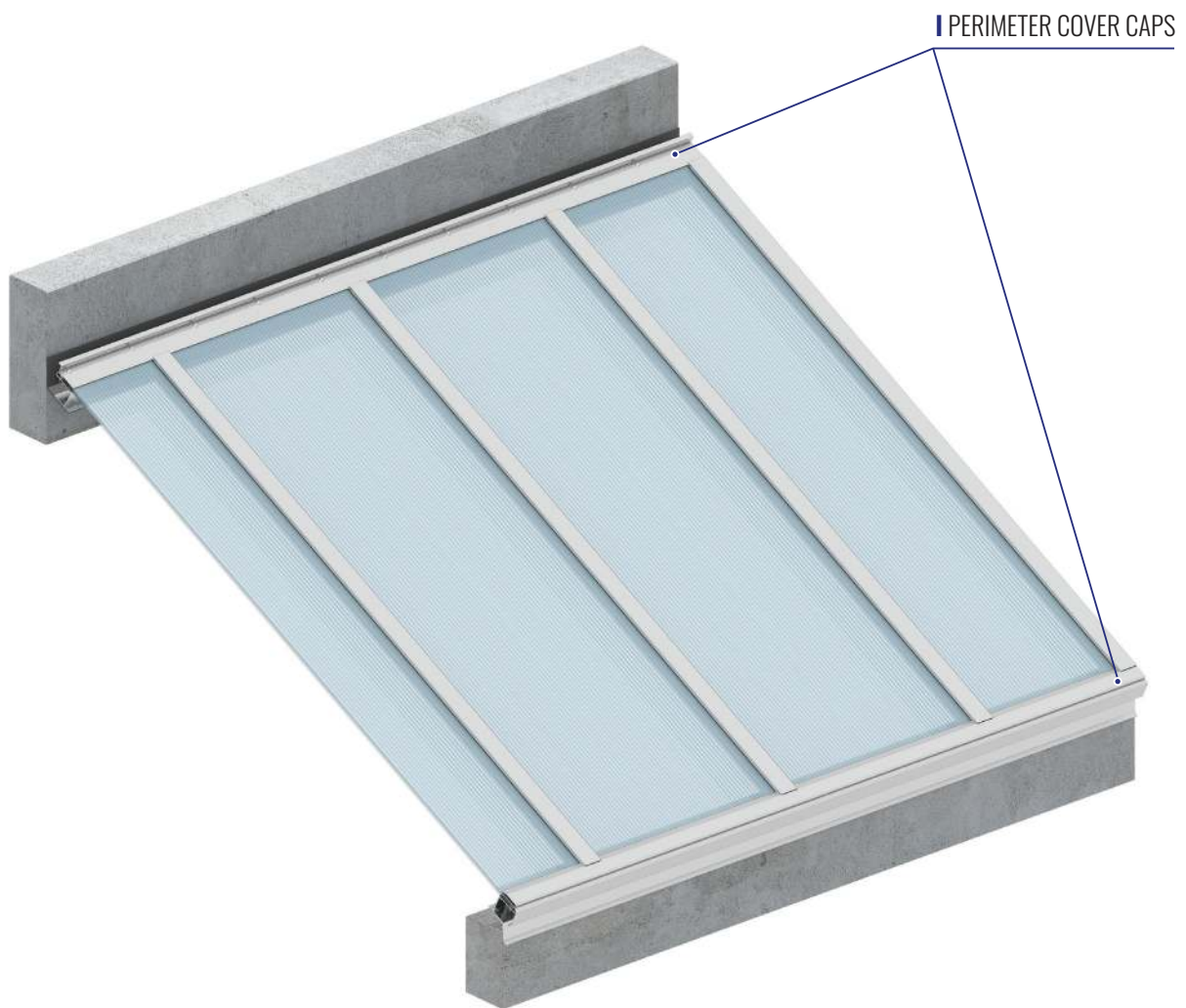
- Repeat steps 5-8 to install the remainder of the glazing and pressure caps.





## STEP 10: INSTALL PERIMETER COVER CAPS

---

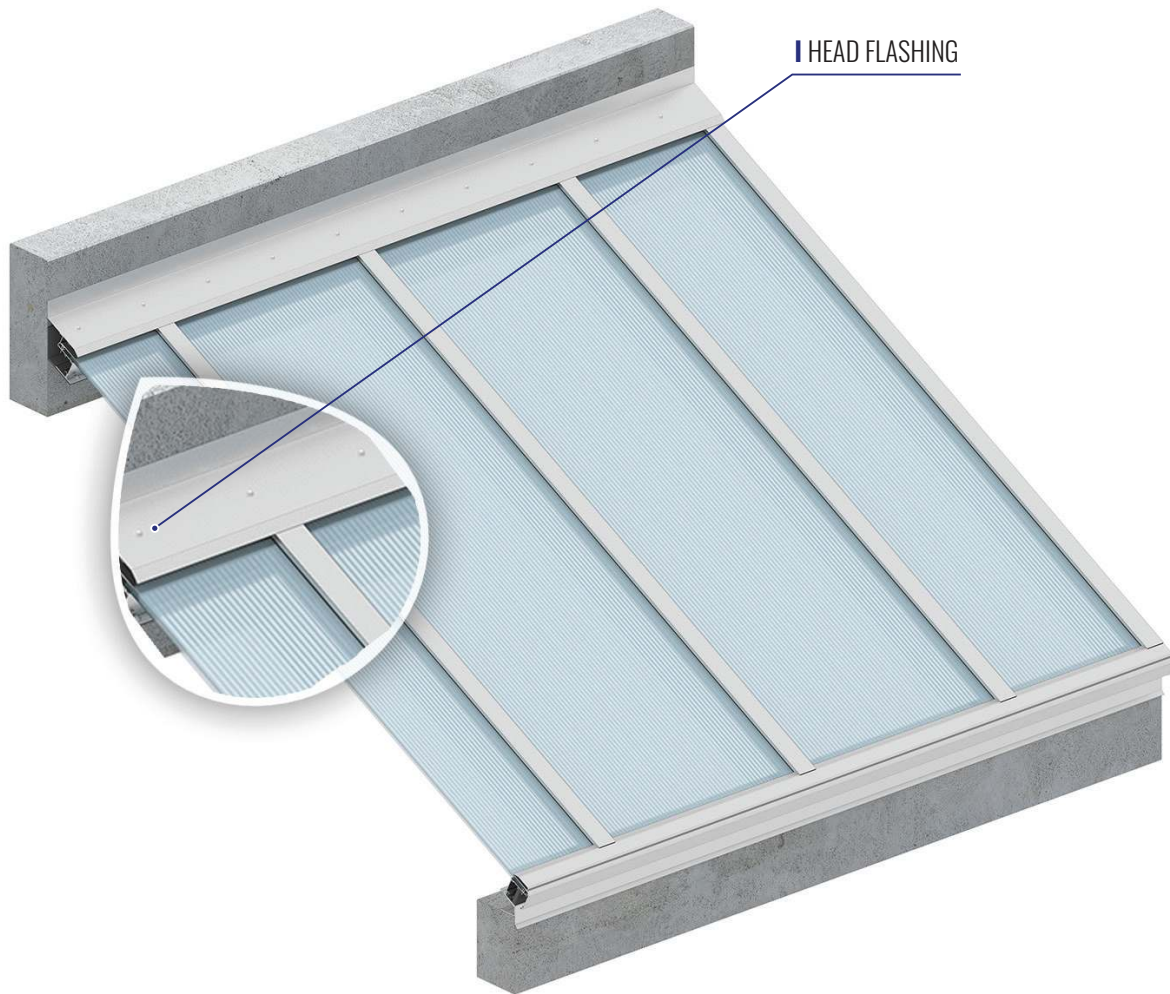


*Note: Cap seal all mitered corner joints.*

## I STEP 11: GUTTERS, DOWNSPOUTS, AND HEAD FLASHING

---

- For canopy applications, install gutters, downspouts, and head flashing.



## I STEP 12: CLEANING AND MAINTENANCE

---

### I After Installation & Future Cleaning:

- Panels should first be hosed off thoroughly with a medium spray of lightly pressure washed to remove any abrasive surface material.
- If desired, after removing surface debris, wash the panels with mild soap or detergent and lukewarm water using only a clean, soft sponge or cloth.
- Continue to gently wash to remove any remaining grime.
- DO NOT SCRUB or use brushes or squeegees.
- Rinse the panels with clean water using hose or pressure washer.
- If stains remain, they can likely be removed before drying by rubbing lightly with a good grade of naphtha or isopropyl alcohol followed by a final wash with mild soap or detergent and a final rinse.
- Dry with a clean, soft cloth to prevent water spotting if desired.

### I Compatible Cleaning Agents:

- Joy
- Palmolive Liquid
- Mild Hand Soap
- Isopropyl Alcohol

### I Incompatible Cleaning Agents:

- Lysol
- Pinesol
- Butyl Cellosolve
- Strong Petroleum Based Solvents
- Abrasive Detergents

## I CARE AND STORAGE

---

- Inspect materials prior to signing for shipment. Photograph any damage or evidence of shortages.
- You must notify EXTECH of any damage or material shortages within **48 hours of receipt**. EXTECH cannot guarantee material replacements for damage reported after 48 hours unless EXTECH (solely) deems the available documentation warrants replacement.
- EXTECH is not responsible for any damage caused by improper unloading, storage, handling, or cleaning.
- Rough treatment of the materials may cause damage and may void warranties.
- All materials should be stored in a secure, dry area.
- Materials must be stored off the floor or ground and (if outdoors) covered with heat reflective, breathable tarpaulins.



If you need assistance, please call

**1-800-500-8083**


EXTECH can provide


- Dedicated phone support
- On-site installation startup assistance
- Complete Installation Services






 EXTECH / Exterior Technologies, Inc.  
200 Bridge St. Pittsburgh, PA 15223

 Email: [info@extechinc.com](mailto:info@extechinc.com)  
Website: [www.extechinc.com](http://www.extechinc.com)

 Toll Free +1 800 500 8083  
Local + 1 412 781 0991

 Toll Free Fax +1 800 500 8012  
Local Fax +1 412 781 9303